



**VVAIBHAV**  
ENGINEERING

THE **NEXT**  
LEVEL  
DRILLING

THE NAME OF *Trust....*

**Manufacturer Of**

**Heavy Duty Water  
Well Drilling  
Rigs And Mining Rigs.**



**VVAIBHAV**  
ENGINEERING

CUSTOMER CARE ☎ +91 96013 93124 | EXPORT ☎ +91 99250 25845

📍 At. Virva, Dholra-Virva Road, Opp. Hanuman Temple, Ta. Lodhika,  
Dist. Rajkot, Gujarat, India-360311.

✉ info@vaibhavengineering.co.in | 🌐 www.vaibhavengineering.co.in



DOWNLOAD  
BROCHURE



Brand City : +91 63532 48722



# THE NEXT LEVEL DRILLING

THE COMPANY YOU CAN RELY ON  
**YOU CAN RELY ON**

With Vaibhav Engineering You Get The Benefit of Trust And Years  
of **Gobal Experience** and **Technical Innovation**.







**VVAIBHAV**  
ENGINEERING



The Name Of  
*Trust....*





## About Company



**VVAIBHAV**  
ENGINEERING

We are one of the Leading Manufacturer and Exporter of DTH Drilling Rig Machine and Rig Machine Accessories and Spares Across the Globe.

We have an Excellent Infrastructure required for manufacture Rig Machine. Also. For Repairing and Services. With All Latest Machinery that are actually required for manufacturing drilling Rig Machine, Rig Machine Accessories, and Spares.

We are sure you will find a Rig Machine for Your Application From our Product Range. If You Have Any Special Requirements, We Have Highly Qualified Teams Of Engineer's And Researchers. Who can Work On Our Requirements and give you the best solution or Machine.

We have Exported DTH Drilling Rig Machine and Rig Machine Accessories And Spares To Different African Countries, UAE, Australia, Nepal, etc.

**OUR VISION** : is to become the 'Partner of choice' and set Standards that acknowledged as 'Best-in-its-Class', Delivering True Value To The Society. We Apire To Reach And Retain Our Position amongst the top three Companies and be the Leading Brand, With in The Next 10 years, in the Industry we Operate in.

**OUR MISION** : is to rapidly grow our bussiness into a dominant position in our product segment, an a sustainable besis and is bases on the core principles of Customer focus, Excellnce of our Rigs, Motivated Workforce and the Speed of our response.

"If there is *magic*  
on this planet, it is  
contained in  
*water...*"







Multi Purpose Heavy Duty Drill

Hole Diameter	6 to 30 Inches
DTH Drilling Depth	3000 Mtr. With 8" Drill Bit
Deck Engine	452 HP Cummins
Truck	Ashok Leyland, Tata, Mahindra, Sino Howo
Hyd. System Pressure	Maximum Working Pressure 4500 psi
Hyd. System	Danfoss High Pressure PVG Valves Auto load Sensing Piston Pump
Work Method	Water Well Drilling Rig. DTH Cum Rotary
Drilling Tower	Box Type Structure Max Capacity - 100 Ton H.S. Rod Handling Capacity 4.572Mtr (15 feet)

Precision Power in Your  
*Hands*

Water Well Ring & Drilling Parts



**VVAIBHAV**  
ENGINEERING

THE NAME OF *Trust*...

Roatryhead	Rotation Torque 11534 Nm
Feed Cylinder	200mm 2 No. Cylinder With Hardchrome
Leveling Jack	140mm 6 No. Box type
Drilling Tower Length	11850 mm
Pull Up Force	100 Ton
Pull Down Force	40 Ton
Machine Length	Customer Choice
Machine Width	Customer Choice

**Mining**  
Application  
With Special  
Features



APPROVED

VE 8000 TESTING VIDEO







Multi Purpose Heavy Duty Drill

Hole Diameter	6 to 30 Inches
DTH Drilling Depth	2500 Mtr. With 7" Drill Bit
Deck Engine	452 HP Cummins
Truck	Ashok Leyland, Tata, Mahindra, Sino Howo
Hyd. System Pressure	Maximum Working Pressure 4500 psi
Hyd. System	Danfoss High Pressure PVG Valves Auto load Sensing Piston Pump
Work Method	Water Well Drilling Rig. DTH Cum Rotary
Drilling Tower	Box Type Structure Max Capacity - 80 Ton H.S. Rod Handling Capacity 4.572Mtr (15 feet)

Quality

Begins On The Inside...  
And Then Works Its Way Out.



Water Well Ring & Drilling Parts



Vaibhav  
ENGINEERING

THE NAME OF Trust...

Roatryhead	Rotation Torque 11534 Nm
Feed Cylinder	180mm 2 No. Cylinder With Hardchrome
Leveling Jack	140mm 6 No. Box type
Drilling Tower Length	11850 mm
Pull Up Force	45 Ton To 80 Ton
Pull Down Force	33000 kgf
Machine Length	Customer Choice
Machine Width	Customer Choice

Mining  
Application  
With Special  
Features







Multi Purpose Heavy Duty Drill

Hole Diameter	6 to 24 Inches
DTH Drilling Depth	1200 Mtr. With 7" Drill Bit
Deck Engine	452 HP Volvo Penta
Truck	Ashok Leyland, Tata, Mahindra, Sino Howo
Hyd. System Pressure	Maximum Working Pressure 4500 psi
Work Method	Water well Drilling Rig. DTH Cum Rotary
Drilling Tower	Box Type Structure Max Capacity - 50 Ton (33070 lbs) Rod Handling Capacity 4.572Mtr (15 feet)

Water Well Ring & Drilling Parts

Feed Cylinder	160mm 2 No. Cylinder With Hardchrome
Leveling Jack	140mm 6 No. Box Type
Drilling Tower Length	10700 mm
Pull Up Force	50000 kgf
Pull Down Force	30000 kgf
Machine Length	Customer Choice
Machine Width	Customer Choice



VVAIBHAV  
ENGINEERING

THE NAME OF Trust....

Aqua Depths, Expert  
*Drill.....*



VE5000 TESTING VIDEO





# VE5000SKID >>> Multi Purpose Heavy Duty Drill

Hole Diameter	6 to 24 Inches
DTH Drilling Depth	1200 Mtr. With 7" Drill Bit
Deck Engine	452 HP Volvo Penta
Truck	Ashok Leyland, Tata, Mahindra, Sino Howo
Hyd. System Pressure	Maximum Working Pressure 4500 psi
Work Method	Water well Drilling Rig. DTH Cum Rotary
Drilling Tower	Box Type Structure Max Capacity - 50 Ton (33070 lbs) Rod Handling Capacity 4.572Mtr (15 feet)

Feed Cylinder	160mm 2 No. Cylinder With Hardchrome
Leveling Jack	140mm 6 No. Box Type
Drilling Tower Length	10700 mm
Pull Up Force	50000 kgf
Pull Down Force	30000 kgf
Machine Length	Customer Choice
Machine Width	Customer Choice

We Only do Our  
*Best.....*







# VE4000

>>> Multi Purpose Heavy Duty Drill

Hole Diameter	6 to 20 Inches
DTH Drilling Depth	1000 Mtr. With 8" Drill Bit
Deck Engine	235 HP To 300 HP Cummins
Truck	Ashok Leyland, Tata, Mahindra, Sino Howo
Hyd. System Pressure	Maximum Working Pressure 4000 psi
Hyd. System	Fully Automatic Updated Technology Hydraulic Rod Lifter
Work Method	Water Well Drilling Rig. DTH Cum Rotary
Drilling Tower	Box Type Structure Max Capacity - 42 Ton H.S. Rod Handling Capacity 4.57 Mtr To 6.00 Mtr

Roatryhead	Roatryhead Powered by Two Orbital Hydraulic Motor Max Speed 40-120 RPM
Feed Cylinder	160mm 2 No. Cylinder With Hardchrome
Leveling Jack	140 mm Jack Box Type
Drilling Tower Length	Customer Choice
Pull Up Force	42000 Kgf
Pull Down Force	21000 Kgf
Machine Length	Customer Choice
Machine Width	Customer Choice

Innovation Below The  
*Surface.....*





# VE3000

## >>> Classic Model

2-Truck, Auto Rod Changer, Heavy Duty Rotary Head With Piston Motor & Piston Pump, Mud Pump with separate Engine.

Hole Diameter	6 to 14 Inches
DTH Drilling Depth	800 Mtr. With 7" Drill Bit
Deck Engine	360 HP Ashok Leyland
Truck	Ashok Leyland, Tata, Mahindra, Sino Howo
Hyd. System Pressure	Maximum Working Pressure 4500 psi
Work Method	Water well Drilling Rig. DTH Cum Rotary
Drilling Tower	Box Type Structure Max Capacity - 35 Ton Rod Handling Capacity 4.572Mtr (15 feet)

*Luxuries*  
are affordable...

## Water Well Ring & Drilling Parts <<<



**VVAIBHAV**  
ENGINEERING

THE NAME OF *Trust*...

Roatryhead	Roatryhead Powered by Two Orbital Hydraulic Motor Max Speed 40-120 RPM
Feed Cylinder	2 140 mm Hydraulic Cylinder with wire rope Combination
Leveling Jack	140 mm Four Hydraulic Jack Open Type
Drilling Tower Length	9350 mm
Pull Up Force	35000 Kgf
Pull Down Force	19000 Kgf
Machine Length	Customer Choice
Machine Width	Customer Choice



APPROVED

VE3000 TESTING VIDEO





# VE2000



## Regular Premium Model

Truck 1 with Compressor and Fuel Tank  
Truck 2 with Hydraulic System + Compressor + Auto Rod Changer.

Hole Diameter	6 to 14 Inches
DTH Drilling Depth	600 Mtr. With 7" Drill Bit
Deck Engine	235 HP Cummins
Truck	Ashok Leyland, Tata, Mahindra, Sino Howo
Hyd. System Pressure	Maximum Working Pressure 3000 psi
Hyd. System	Fully Automatic Updated Technology Hydraulic Rod Lifter
Work Method	Water Well Drilling Rig. DTH Cum Rotary
Drilling Tower	Box Type Structure Max Capacity - 22 Ton H.S. Rod Handling Capacity 6 Mtr (15 Feet) & (20 Feet)

## Water Well Ring & Drilling Parts



# VVAIBHAV

## ENGINEERING

THE NAME OF *Trust*...

Roatryhead	Roatryhead Powered by Two Orbital Hydraulic Motor Max Speed 0-120 RPM
Feed Cylinder	200 mm Hydraulic Cylinder with wire rope Combination
Leveling Jack	140 mm Four Hydraulic Jack Open Type
Drilling Tower Length	Customer Choice
Pull Up Force	22000 Kgf
Pull Down Force	14000 Kgf
Machine Length	Customer Choice
Machine Width	Customer Choice

*Nothing*  
But The Best....







**Premium Model**  
Truck 1 with Compressor and Fuel Tank  
Truck 2 with Hydraulic System + Compressor + Auto Rod Changer + Hydraulic Drive Mud Pump

Hole Diameter	6 to 14 Inches
DTH Drilling Depth	600 Mtr. With 7" Drill Bit
Deck Engine	235 HP Cummins
Truck	Ashok Leyland, Tata, Mahindra, Sino Howo
Hyd. System Pressure	Maximum Working Pressure 3000 psi
Hyd. System	Fully Automatic Updated Technology Hydraulic Rod Lifter
Work Method	Water Well Drilling Rig. DTH Cum Rotary
Drilling Tower	Box Type Structure Max Capacity - 22 Ton H.S. Rod Handling Capacity 6 Mtr (15 Feet) & (20 Feet)

*Quality*  
and professionalism....

Water Well Ring & Drilling Parts



**VVAIBHAV**  
ENGINEERING

THE NAME OF *Trust*...

Roatryhead	Roatryhead Powered by Two Orbital Hydraulic Motor Max Speed 0-120 RPM
Feed Cylinder	200 mm Hydraulic Cylinder with wire rope Combination
Leveling Jack	140 mm Four Hydraulic Jack Open Type
Drilling Tower Length	Customer Choice
Pull Up Force	22000 Kgf
Pull Down Force	14000 Kgf
Machine Length	Customer Choice
Machine Width	Customer Choice





# VE2000SKID



## Premium Export Model Skid Mounted

Platform With Hydraulic System & Duck Engine

Hole Diameter	6 to 14 Inches
DTH Drilling Depth	600 Mtr.
Deck Engine	Ashok Leyland
Compressor	Platform With Compressor
Hyd. System Pressure	Maximum Working Pressure 3000 psi
Hyd. System	Fully Automatic Updated Technology Hydraulic Rod Lifter
Work Method	Water Well Drilling Rig, DTH Cum Rotary
Drilling Tower	Box Type Structure Max Capacity - 22 Ton H.S. Rod Handling Capacity 6 Mtr (15 Feet) & (20 Feet)

*Customers*

Care If The Quality Is Fair...



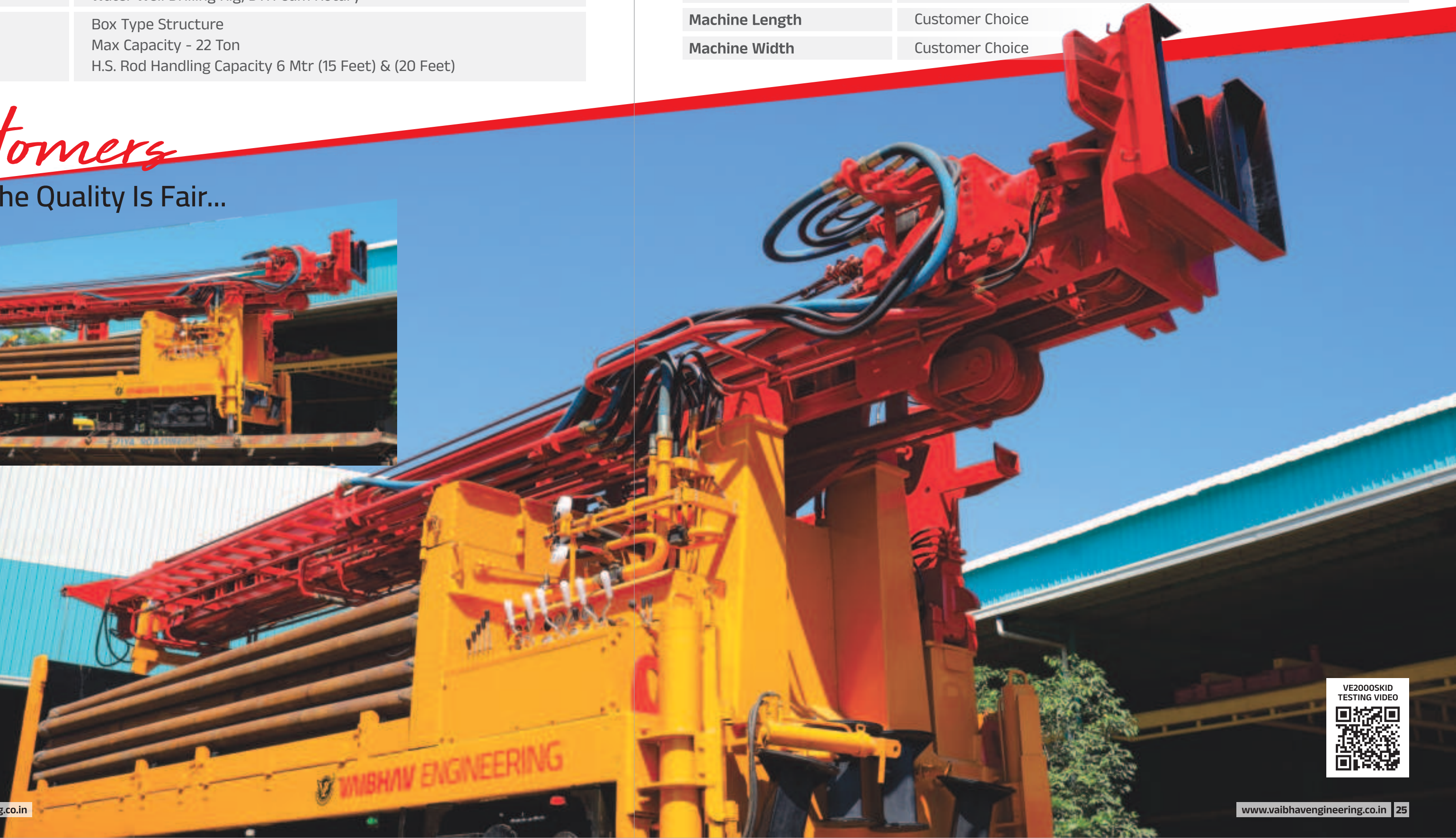
## Water Well Ring & Drilling Parts



**VVAIBHAV**  
ENGINEERING

THE NAME OF *Trust*...

Roatryhead	Roatryhead Powered by Two Orbital Hydraulic Motor Max Speed 0-120 RPM
Feed Cylinder	200 mm Hydraulic Cylinder with wire rope Combination
Leveling Jack	140 mm Four Hydraulic Jack Open Type
Drilling Tower Length	Customer Choice
Pull Up Force	22000 Kgf
Pull Down Force	14000 Kgf
Machine Length	Customer Choice
Machine Width	Customer Choice





# VE1000A



## Multi Purpose Heavy Duty Drill

Truck Engine Connected Hydraulic System  
Compressor + Mud Pump + Welding Machine & Rod Changing Manual

Hole Diameter	6 to 10 Inches
DTH Drilling Depth	350 Mtr. With 7" Drill Bit
Deck Engine	200 HP or Power From Truck Engine
Truck	Ashok Leyland, Tata, Mahindra, Sino Howo
Hyd. System Pressure	Maximum Working Pressure 2000-4000 psi
Rod Lifter	Manual
Work Method	Water Well Drilling Rig. DTH Cum Rotary
Drilling Tower	Box Type Structure Max Capacity - 15 Ton (33070 lbs) H.S. Rod Handling Capacity 4.572 Mtr (15 Feet)

Ensure The

*Quality.....*



## Water Well Ring & Drilling Parts



# VVAIBHAV ENGINEERING

THE NAME OF *Trust*...

Roatryhead	Roatryhead Powered by Two Orbital Hydraulic Motor Max Speed 0-120 RPM
Feed Cylinder	200 mm Hydraulic Cylinder with wire rope Combination
Leveling Jack	140 mm Four Hydraulic Jack Open Type
Drilling Tower Length	9350 mm
Pull Up Force	18000 Kgf
Pull Down Force	12000 Kgf
Machine Length	Customer Choice
Machine Width	Customer Choice



VE1000A TESTING VIDEO







>>> **Multi Purpose Heavy Duty Drill Double Truck**

Truck Engine Connected Hydraulic System  
Compressor + Mud Pump + Welding Machine & Rod Changing Manual

Hole Diameter	6 to 10 Inches
DTH Drilling Depth	400 Mtr. With 7" Drill Bit
Deck Engine	200 HP or Power From Truck Engine
Truck	Ashok Leyland, Tata, Mahindra, Sino Howo
Hyd. System Pressure	Maximum Working Pressure 2000-4000 psi
Rod Lifter	Manual
Work Method	Water Well Drilling Rig. DTH Cum Rotary
Drilling Tower	Box Type Structure Max Capacity - 15 Ton (33070 lbs) H.S. Rod Handling Capacity 4.572 Mtr (15 Feet)

We Believe In

*Quality.....*

**Water Well Ring & Drilling Parts**



**VVIBHAV**  
ENGINEERING

THE NAME OF *Trust*...

Roatryhead	Roatryhead Powered by Two Orbital Hydraulic Motor Max Speed 0-120 RPM
Feed Cylinder	200 mm Hydraulic Cylinder with wire rope Combination
Leveling Jack	140 mm Four Hydraulic Jack Open Type
Drilling Tower Length	9350 mm
Pull Up Force	18000 Kgf
Pull Down Force	12000 Kgf
Machine Length	Customer Choice
Machine Width	Customer Choice



APPROVED

VE1000 TESTING  
VIDEO





# VE1000 MICRO PILLING AUTOMATIC

>>> Auto Piling Machine

Hole Diameter	6 to 14 Inches
DTH Drilling Depth	50 Mtr. With 14" Drill Bit
Deck Engine	200 HP or Power From Truck Engine
Truck	Ashok Leyland, Tata, Mahindra, Sino Howo
Hyd. System Pressure	Maximum Working Pressure 2000-4000 psi
Rod Lifter	Micro Piling Automatic
Work Method	Water Well Drilling Rig. DTH Cum Rotary
Drilling Tower	Box Type Structure Max Capacity - 15 Ton (33070 lbs) H.S. Rod Handling Capacity 4.572 Mtr (15 Feet)

Water Well Ring & Drilling Parts <<<



**VVAIBHAV**  
ENGINEERING

THE NAME OF *Trust*...

Roatryhead	Roatryhead Powered by Two Orbital Hydraulic Motor Max Speed 0-120 RPM
Feed Cylinder	200 mm Hydraulic Cylinder with wire rope Combination
Leveling Jack	140 mm Four Hydraulic Jack Open Type
Drilling Tower Length	9350 mm
Pull Up Force	18000 Kgf
Pull Down Force	12000 Kgf
Machine Length	Customer Choice
Machine Width	Customer Choice

Unleashing Subsurface

*Potential.....*







Where Water Meets  
The Surface.

Hole Diameter	8 Inches
DTH Drilling Depth	250 Meter To 300 Meter
Compressor	1100CFM
Deck Engine	180 HP

Water Well Ring & Drilling Parts



**VVAIBHAV**  
ENGINEERING

THE NAME OF *Trust*...

Truck	6 Wheel Truck
Hyd. System Pressure	2000 Psi Working Pressure
Rod Lifter	Manual
Work Method	DTH & Mud Drilling

Boring For Life's Most Vital

*Element....*







# VE C 1500 ULTRA

Mining Machine Of  
The Highest Quality

Hole Diameter	6 to 14 Inches
DTH Drilling Depth	500 Mtr.
Deck Engine	585 HP CUMMINS KTA-1150-C (STAGE V)
Compress	AtlasCopco 1200CFM
Hyd. System Pressure	Danfoss 250 Bar Pressure
Hyd. System	Semi Auto
Work Method	Water Well Drilling Rig, DTH Cum Rotary
Drilling Tower	Box Type Structure Max Capacity - 35 Ton H.S. Rod Handling Capacity 6 Mtr

A Company Of

Quality.....



Water Well Ring & Drilling Parts



VVIBHAV

ENGINEERING

THE NAME OF Trust....

Roatryhead	Roatryhead Powered by Two Orbital Hydraulic Motor Max Speed 0-120 RPM
Feed Cylinder	200 mm Hydraulic Cylinder with wire rope Combination
Leveling Jack	140 mm Four Hydraulic Jack Open Type
Drilling Tower Length	Customer Choice
Pull Up Force	21000 Kgf
Pull Down Force	12000 Kgf
Machine Length	Customer Choice
Machine Width	Customer Choice

Mighty  
Mining  
application





# VE C 1000A >>> Multi Purpose Heavy Duty Drill

Hole Diameter	6 to 12 Inches
DTH Drilling Depth	300 Mtr. With 7" Drill Bit
Deck Engine	188 HP & 218 HP Deck Engine
Hyd. System Pressure	Maximum Working Pressure 2500 Psi
Work Method	Water Well Drilling Rig, DTH Cum Rotary

Drilling Tower	Box Type Structure Max Capacity - 12 Ton H.S. Rod Handling Capacity 15 Feet
Rod Lifter	Automatic





# VE C 700 >>> Multi Purpose Heavy Duty Drill

Leveling Jack 100mm From Hydraulic Jack Open Type  
Drilling Tower Length 5000mm

Hole Diameter	6 to 10 Inches
DTH Drilling Depth	300 Mtr. With 7" Drill Bit
Deck Engine	188 HP & 218 HP Deck Engine
Hyd. System Pressure	Maximum Working Pressure 2500 Psi
Work Method	Water Well Drilling Rig, DTH Cum Rotary
Drilling Tower	Box Type Structure Max Capacity - 16 Ton H.S. Rod Handling Capacity 10 Feet
Rod Lifter	Manual

We Expect  
*Excellence.....*



Water Well Ring & Drilling Parts <<<



**VVAIBHAV**  
ENGINEERING

THE NAME OF *Trust....*







Mining Machine Of The  
Highest Quality

Hole Diameter	5 to 8 Inches
DTH Drilling Depth	300 Mtr. (6.5")
Deck Engine	188 HP & 218 HP Deck Engine
Truck	Crawler
Hyd. System Pressure	2500 PSI MAX

Aim For The

*Best....*

Water Well Ring & Drilling Parts



**VVAIBHAV**  
ENGINEERING

THE NAME OF *Trust....*

Rod Lifter	6 Feet
Work Method	DTH
Electric Drive	75 HP AC Driv Motor
Drilling Method	45° to 90°
Capacity	300MTR

**Mining**  
Application  
With Special  
Features





# VE EX 150

Piercing the Earth's Veins for Liquid Lifelines

Hole Diameter	6 to 12 Inches
DTH Drilling Depth	15 Meter To 50 Meter
Compressor	Customize
Deck Engine	By Excavator

Turning Earth Into Liquid  
*Gold.....*

## Water Well Ring & Drilling Parts



**VVIBHAV**  
ENGINEERING

THE NAME OF *Trust....*

Crawler	Customize (Savvy / Hyundai / Tata)
Hyd. System Pressure	2500 PSI
Rod Lifter	10 Feet
Work Method	DTH



VE EX 150  
TESTING VIDEOE





# VE P 200

>>> Mining Machine Of The Highest Quality

Hole Diameter	4 to 8 Inches
DTH Drilling Depth	150 Mtr. With 7" Drill Bit
Deck Engine	Tactor Operated
Hyd. System Pressure	Maximum Working Pressure 2900 Psi
Work Method	DTH Drilling Method
Drilling Tower	Box Type Structure Max Capacity - 6 Ton H.S. Rod Handling Capacity 5 Feet
Rod Lifter	Max Speed 0-120 RPM



# VE T 600

>>> Multi Purpose Heavy Duty Drill  
Levelling Jack 110mm From Hydraulic Jack Open Type

THE NAME OF Trust...

Hole Diameter	4 to 8 Inches
DTH Drilling Depth	300 Mtr. With 7" Drill Bit
Deck Engine	Tactor Operated
Hyd. System Pressure	Maximum Working Pressure 2900 Psi
Work Method	DTH Drilling And Solar Piling
Drilling Tower	Box Type Structure Max Capacity - 12 Ton H.S. Rod Handling Capacity 10 Feet
Rod Lifter	Max Speed 0-120 RPM





# VE TPU

## >>> Multi Purpose Heavy Duty Drill Double Truck

Truck Engine Connected Hydraulic System  
Compressor + Mud Pump + Welding Machine & Rod Changing Manual

Hole Diameter	6 to 10 Inches
DTH Drilling Depth	400 Mtr.
Deck Engine	200 HP or Power From Truck Engine
Truck	Ashok Leyland 2820 or Ashok Leyland 2825
Hyd. System Pressure	Maximum Working Pressure 2000 - 2500 Psi
Rod Lifter	Manual

Our Survival Line In

*Quality.....*



# VVAIBHAV

## ENGINEERING

THE NAME OF *Trust....*

**Heavy Duty Drilling**  
Drilling Parts & Water Well Rigs



APPROVED

VE TPU TESTING  
VIDEO





# MUD PUMP >>> Multi Purpose Heavy Duty Mud Pump

Size	10" x 7" Inches
Engine	218 HP With Gear Box
Operating	V Belt Drive
Truck	4 Tyre Trolly
Hyd. System Pressure	Maximum Working Pressure2000 - 4000 Psi

*Quality*  
For Manageability.....



**VVAIBHAV**  
ENGINEERING

THE NAME OF *Trust....*

**Heavy Duty Drilling**  
Drilling Parts & Water Well Rigs





DTH DRILL PIPE
A.P.I. 2 3/8" REG

>>>
DTH Drilling Pipe Line

DTH Drill Pipe	73 mm Pipe
Application	Watering & Mining Holes
Drill Pipe Type	Drill Seamless Steel Pipe, Finished Materials
Wall Thickness	73 mm OD & 62 ID
Adopter Thread Type	A.P.I. Standards, Internal Flush, Regular, Full Hole
Drill Road Outer Diameter	85 mm
With Spanner Size	60 mm
Hole Diameter	4 To 5.5 Inches
DTH Drilling Depth	500 Feet
DTH Drill Rod Length	As Per Customer Requirement



DTH DRILL PIPE
A.P.I. 2 3/8" IF

>>>
DTH Drilling Pipe Line

DTH Drill Pipe	90 mm Pipe
Application	Watering & Mining Holes
Drill Pipe Type	Drill Seamless Steel Pipe, Finished Materials
Wall Thickness	90 mm OD & 75 ID
Adopter Thread Type	A.P.I. Standards, Internal Flush, Regular, Full Hole
Drill Road Outer Diameter	95 mm
With Spanner Size	70 mm
Hole Diameter	4 To 6.5 Inches
DTH Drilling Depth	800 Feet
DTH Drill Rod Length	As Per Customer Requirement



DTH DRILL PIPE
A.P.I. 2 7/8" IF

>>>
DTH Drilling Pipe Line

DTH Drill Pipe	114 mm Pipe
Application	Watering & Mining Holes
Drill Pipe Type	Drill Seamless Steel Pipe, Finished Materials
Wall Thickness	114 mm OD & 98 ID
Adopter Thread Type	A.P.I. Standards, Internal Flush, Regular, Full Hole
Drill Road Outer Diameter	125 mm
With Spanner Size	95 mm
Hole Diameter	6.5 To 8 Inches
DTH Drilling Depth	2500 Feet
DTH Drill Rod Length	As Per Customer Requirement



DTH DRILL PIPE
A.P.I. 3 1/2" IF

>>>
DTH Drilling Pipe Line

DTH Drill Pipe	127 mm Pipe
Application	Watering & Mining Holes
Drill Pipe Type	Drill Seamless Steel Pipe, Finished Materials
Wall Thickness	127 mm OD & 110 ID
Adopter Thread Type	A.P.I. Standards, Internal Flush, Regular, Full Hole
Drill Road Outer Diameter	140 mm
With Spanner Size	105 mm
Hole Diameter	8 To 10 Inches
DTH Drilling Depth	3000 Feet
DTH Drill Rod Length	As Per Customer Requirement





# DTH DRILL PIPE

## A.P.I. 4"IF

>>> DTH Drilling Pipe Line

DTH Drill Pipe	140 mm Pipe
Application	Watering & Mining Holes
Drill Pipe Type	Drill Seamless Steel Pipe, Finished Materials
Wall Thickness	140 mm OD & 124 ID
Adopter Thread Type	A.P.I. Standards, Internal Flush, Regular, Full Hole
Drill Road Outer Diameter	150 mm
With Spanner Size	115 mm
Hole Diameter	8 To 12 Inches
DTH Drilling Depth	2500 Feet
DTH Drill Rod Length	As Per Customer Requirement



# DTH DRILL PIPE

## A.P.I. 4½" IF

>>> DTH Drilling Pipe Line

DTH Drill Pipe	152 mm Pipe
Application	Watering & Mining Holes
Drill Pipe Type	Drill Seamless Steel Pipe, Finished Materials
Wall Thickness	152 mm OD & 136 ID
Adopter Thread Type	A.P.I. Standards, Internal Flush, Regular, Full Hole
Drill Road Outer Diameter	160 mm
With Spanner Size	125 mm
Hole Diameter	10 To 14 Inches
DTH Drilling Depth	2500 Feet
DTH Drill Rod Length	As Per Customer Requirement



# INTERNATIONAL

## STANDARD PRODUCT



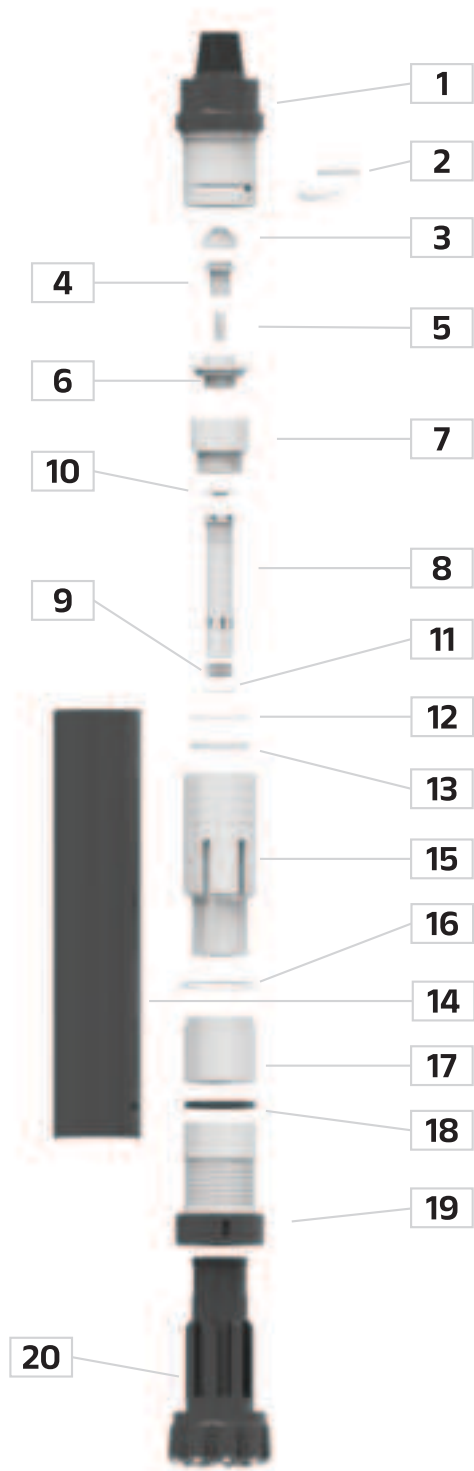


# HAMMERS & BITS

Suitable For Mining, Construction  
& Water Well

Mining - Underground and surface mining  
Construction - Pilling, Quarrying & Dimensional stone Drilling  
Water Well

Manufacturer & Exporter Of  
DTH Hammers & Bits  
**6" to 20"**  
Sizes Are Available



## Water Well Ring & Drilling Parts



**VVIBHAV**  
ENGINEERING

THE NAME OF Trust...

Part List			
Sr. No.	Name of Item	Sr. No.	Name of Item
1	Coupler	11	Control Tube Nylon Ring
2	Coupler Keys	12	Nylon Ring
3	Check Valve Cap	13	Steel Ring
4	Check Valve	14	Hammer Case
5	Spring	15	Piston
6	Top Valve	16	Hammer Case
7	Socket	17	Guide Bush
8	Control Tube	18	Bit Lock
9	Control Yube O-Ring	19	Front Chuck Nut
10	Control Tube Nylon Cap	20	Bit





# AIR COMPRESSOR



Premium  
Quality Air Compressor



# MUD PUMP



**VVAIBHAV**  
ENGINEERING

THE NAME OF *Trust*...





# AIR COMPRESSOR



## High capacity drilling

The DrillAir range of compressors puts you in full control

*Sustainable Productivity*

*Atlas Copco*

## DrillAir : Putting you in control

We have developed, and will continue developing, a full range of compressors known as the DrillAir range. This range of compressors is specifically developed to cover a multitude of drilling application. The DrillAir range is built scientifically around the principals of pressure and flow. The focus of the design is the relationship between these two variables and for the compressor to find the combination which is right for the application - to improve the efficiency aspects of time spent and fuel consumed. With the DrillAir range you achieve the maximum air flow at any pressure setting.

There is no such thing as one size fits all when it comes to efficient drilling. Depending on the depth of hole and the size of the hammer the right product makes all the difference. The DrillAir range gives you the opportunity to choose a product which is right for your core business, while giving you the flexibility to adapt to changes in well depth and hammer size of any custom applications.

Let us find the DrillAir machine that is right for you!

### XATS 1200



34.6-31.5 m³/min  
5-10 bar

### XAVS 1000



28.9-25.6 m³/min  
5-14 bar

### V900/V1200



36.8-22.8 m³/min  
15-25 bar

### X1300/Y1300



38.9-33 m³/min  
13-35 bar

## Industries and applications



### Drilling



Geothermal drilling  
and construction.



### Mining



Blast hole drilling  
and exploration.



### Oil & Gas



Pipeline, well services  
and aerated drilling.

## Water Well Ring & Drilling Parts



**VVAIBHAV**  
ENGINEERING

THE NAME OF *Trust*...

## Technology that makes a difference



The combination of DrillAirXpert, the Atlas Copco screw element and a Cummins engine provides high efficiency for a wide range of pressure and flow settings.

DrillAirXpert offers up to 30% increased drilling speed.



Dynamic Flow Boost™ gives up to 4 m³/min additional flow when flushing ad during drill stem refill. It means faster flushing, faster stem refill and a shorter time to finish drilling.

Dynamic Flow Boost can achieve 10% more flow at lower working pressure for larger diameter drilling.



Thanks to the intuitive PACE™ system (Pressure Adjusted thru Cognitive Electronics) you receive the most options from a single compressor.

This pioneering technology enables multiple pressure and flow settings, ensuring you match air flow and pressure to your application needs.



Atlas Copco XPR extends the working pressure range.

It is based on patented technology and lets you set the working pressure as low as 15 bar.



**+30%**  
DRILLING SPEED

**DYNAMIC FLOW BOOST**  
UP TO **10%**  
ADDED FLOW FOR HOLE FLUSHING

**BUY-BACK**  
**EASY**  
**DIVESTMENT**

Data may change depending on model.

## Built to be your long-term partner



The new oil separator system design reduces maintenance time by more than one hour.

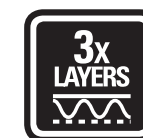
The centralized drain system makes the maintenance easier and less time consuming.

The 500 hour service interval reduces the maintenance frequency.



A strategic engine choice to meet your needs. Guaranteed support and longevity.

We chose the Cummin Stage III engine for this range.



The three layer protection coating of all bodywork minimizes repainting costs.

The top layer, a 100µm powder coat creates a barrier against mechanical damage. The 100µm layer of primer protects from corrosion infiltrating under the coating.

In the event of coating damage, the steel is protected by a Zincor layer.



**>10**  
CORROSION FREE  
**YEARS**

**SERVICE**  
**INTERVAL (HRS)**  
**500**

**FUEL SAVING UP TO**  
**15%**



# AIR COMPRESSOR



## High capacity drilling

The DrillAir range of compressors puts you in full control

*Sustainable Productivity*

*Atlas Copco*

## Built Better....



Advanced functionality with PACE™ function and IP65 protection.



PACE™ Technology: Electronically controlled pressure regulating valve providing a wider pressure and FAD range.



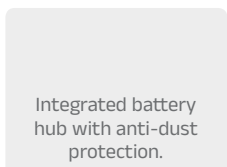
Cummins G3/Stage IIIA performance engine.



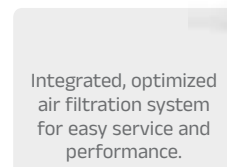
Additional fuel filter for improved engine protection.



Sound attenuated muffler inside.



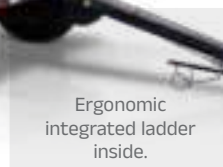
Integrated battery hub with anti-dust protection.



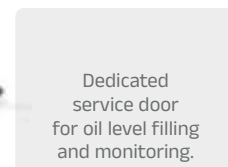
Integrated, optimized air filtration system for easy service and performance.



Integrated fail-safe outlet valves.



Ergonomic integrated ladder inside.



Dedicated service door for oil level filling and monitoring.

## Performs Better !



Visual Xc controller with PowerXpert, Dynamic Flow Boost and automatic start/stop.



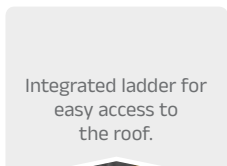
Centralized drain for easy service.



Toggle switch to allow easy pressure switching.



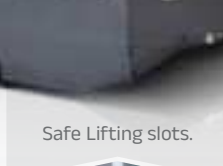
DrillAirXpert to guarantee the most efficient drilling speed.



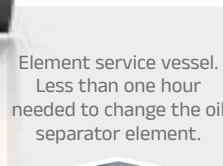
Integrated ladder for easy access to the roof.



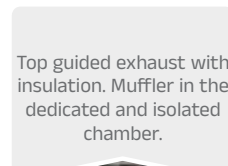
Highly efficient in-house designed two-stage screw element.



Safe lifting slots.



Element service vessel. Less than one hour needed to change the oil separator element.



Top guided exhaust with insulation. Muffler in the dedicated and isolated chamber.

\* V1200 machine is wheel mounted as standard. Design is the same box as the V900.

## Water Well Ring & Drilling Parts



**VVAIBHAV**  
ENGINEERING

THE NAME OF *Trust*...

## Technical Data

		XATS 1200	XAVS 1000	V900	V1200	X1300	Y1300
Max Pressure	bar	5-10	5-14	16-25	15-25	15-30	15-35
	psi	72-150	72-203	232-363	217-363	217-435	217-508
Flow	m³/min	34, 6-31, 5	28, 9-25, 6	25, 4-22, 8	36, 8-34	38, 9-35, 4	37, 1-33
	l/s	578-520	482-425	423-380	613-566	648-590	618-550
	cfm	1225-1102	1021-901	896-805	1299-1200	1373-1250	1309-1165
Regulation system		PACE	PACE	PACE	DrillAirXpert	DrillAirXpert	DrillAirXpert
Extended Pressure Range XPR (optional)	bar	NA	NA	NA	NA	13-19	13-19
Flow in Dynamic Flow Boost mode	m³/min (l/s)	N/A	N/A	N/A	36.8 (613) at 15 bar	38.9 (648) at 15 bar	37.1 (618) at 15 bar
Engine model		DCEC QSL8.9-C360-30	DCEC QSL8.9-C360-30	DCEC QSL8.9-C360-30	DCEC QSL13-C475-30	DCEC QSL13-C550-30	DCEC QSL13-C550-30
Engine band answer		Cummins Stage III	Cummins Stage III	Cummins Stage III	Cummins Stage III	Cummins Stage III	Cummins Stage III
Engine power	kW	264	264	264	364	410	410
Engine speed range	rpm	1200-1900(1700 nom)	1200-1900(1700 nom)	1200-1900(1700 nom)	1300-1700(1600 nom)	1300-1850(1700 nom)	1300-1900(1700 nom)
Dimensions wago (l x w x h)	mm	4252x2100x2500	4252x2100x2500	4252x2100x2500	5000x2100x2405	5000x2250x2510	5000x2250x2510
Dimensions support (l x w x h)	mm	3830x2100x2250	3830x2100x2250	3830x2100x2250	4100x2100x2180	4210x2250x2270	4210x2250x2270
Dimensions skid	mm	3650x2100x2360	3650x2100x2360	3650x2100x2360	4100x2100x2180	4210x2250x2440	4210x2250x2440
Dry weight wagon	kg	4079	4079	4079	5765	6190	6190
Wet weight wagon	kg	4583	4583	4583	6500	7150	7150
Dry weight support	kg	3850	3850	3850	5118	5540	5540
Wet weight support	kg	4355	4355	4355	5850	6500	6500
Fuel tank capacity	Lit	420	420	420	614	876	876

## OPTIONS AVAILABLE

- WAGON
- AFTER COOLER
- SUPPORT MOUNTED
- CE CERTIFICATION
- SKID
- XPR
- COLD START
- REFINING EQUIPMENT

## Unmatched compactness

The small-footprint gives you the maximum options when it comes to transportation.

*Sustainable Productivity*





# AIR COMPRESSOR



## High capacity drilling

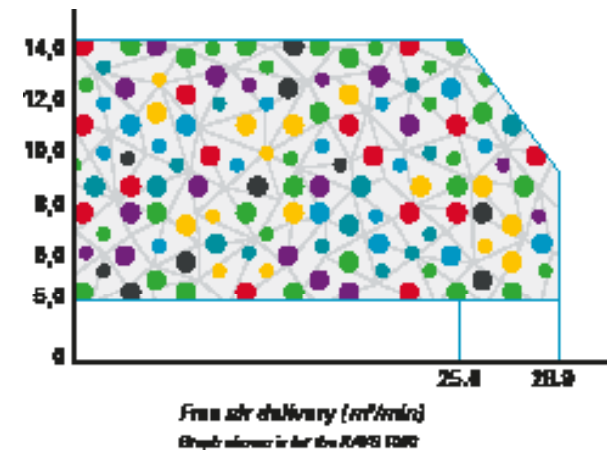
The DrillAir range of compressors puts you in full control

*Sustainable Productivity*



## PACE™ technology

PACE technology gives you higher utilisation, more versatility, improved efficiency savings and a higher return on investment!



### What PACE is :

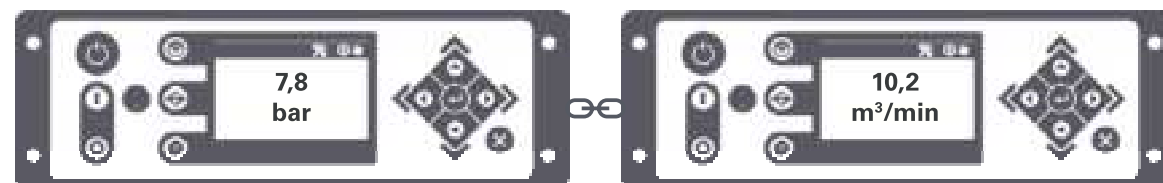
- ✓ A electronic regulation system programmed via d digital controller.
- ✓ A system that offers the widest operating pressure range within a single compressor. Allowing multiple pressure and flow combinations.
- ✓ A simple to use system with pinpoint accuracy adn ensuring safety. Guaranteeing the long-term performance of the compressor.
- ✓ A system that gives you the versatility of three machines in one package.

### What PACE is NOT :

- ✗ A Linear system where adjusting the pressure dictates the flow.
- ✗ A regulation valve where you use guess work to manually adjust the settings.

You pick the pressure...

Your application's needs dictate the flow...



The PACE controller locks in, and regulates, the perfect combination!

## DrillAirXpert's performance management system

### Hardware



Cotroller Xc4003



Electronically controlled inlet valve



Variable minimum pressure valve



DrillAirXpert



Dynamic Flow Boost®



Direct Flow Control



Extended pressure range

## Water Well Ring & Drilling Parts



**VVAIBHAV**  
ENGINEERING

THE NAME OF *Trust*...

## Product Portfolio

### AIR COMPRESSORS

#### READY TO GO

- 1-5 m³/min
- 7-12 bar



#### VERSATILITY

- 5,5-22 m³/min
- 7-20 bar



Diesel and electric options available

#### PRODUCTIVITY PARTNER

- 19-116 m³/min
- 10-345 bar



### GENERATORS

#### PORTABLE

- 1,6-12 kVA



#### MOBILE

- 9-1450\* kVA



#### INDUSTRIAL

- 10-2250\* kVA



\*Multiple configurations available to produce power for any size application

### DEWATERING PUMPS

#### ELECTRIC SUBMERSIBLE

- 250-16.500 l/min



#### CENTRIFUGAL

- 833-23.300 l/min



#### SMALL PORTABLE

- 210-2500 l/min



Diesel and electric options available

### LIGHT TOWERS

#### LED



#### METAL HALIDE



#### ELECTRIC



Photos and illustrations contained herein might depict products with optional and/or extra components which are not included with the standard version of the product and, therefore, are included in a purchase of such product unless the customer specifically purchases such optional/extra components. We reserve the right to change the specifications and design of products described in this literature without notice. Not all products are available in all markets.

## Committed to sustainable prodcutivity

Atlas Copco's Power Technique business area has a forward-thinking philosophy. For us, creating customer value is all about anticipating and exceeding your future needs - while never compromising our environmental principles. Looking ahead and staying ahead is the only way we can ensure we are your long term partner.



# AIR COMPRESSOR

»» *One Tough  
Animal™*



## PA1224p



### Features :

- Faster drilling
- Best in class fuel efficient<sup>#</sup>
- Compact in its class
- Designed to operate in an ambient of 52°C
- Cost effective drilling
- Rugged enclosure for dusty environment
- Best in resale value
- Maintenance free batteries
- Pre-cleaner ensures better life on package
- Option of dual pressure i.e LP and HP
- Wide lockable doors for ease of serviceability
- Cabin lights for beyond day operation

\* In Accordance to ISO1217 1996 Annexure E  
# ATC Version

## Model

## PA122p

### COMPRESSOR ROTARY SCREW/ TWO STAGE

Free-Air Delivery*	1224(34.6) cfm(m3/min)
Working Pressure	320/335 (22/23.1) psig (bar)
Air Discharge Outlet NPT Size	2"
Air Discharge Outlet Quantity	1
Min & Max Ambient Temperature	5°C & 52°C
Compressor Oil Capacity	26.4 (100) US gal(L)

### ENGINE

Make	Cummins
Model	NTA855-C
Full Speed	1900(rpm)
Idle Speed	1200(rpm)
Bhp @ Full Speed	415@1900

### ENGINE

Battery	24(V)
Batter Capacity	2 x 12, 160 Ah

### DIMENSION (SKID VERSION)

Overall Length	151(3835) in(mm)
Overall Width	74.1(1882) in(mm)
Overall Height	76.7(1950) in(mm)
Overall Weight	10,362(4,700) lb(kg)

Product improvement is a continuous goal at Bobcat. Design and specifications are subject to changes without notice or obligation.



»» People.  
Passion.  
Performance.



**VVAIBHAV**  
ENGINEERING  
THE NAME OF *Trust...*

## Product Portfolio



### Portable Diesel Compressors

Decades of experience in mining,  
infrastructure & construction.

160 - 1250 cfm

Chicago Pneumatic compressors are robust, reliable, flexible,  
easy to maintain, versatile & can be tuned for all type of work.

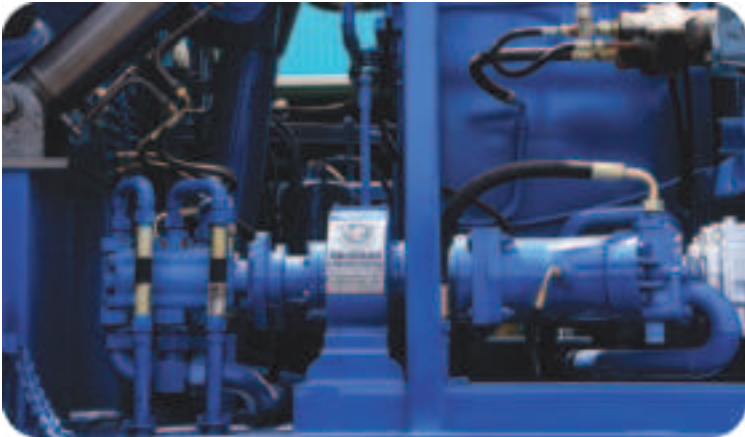
Model	Air Flow (cfm) 1	Working pressure (psig)	Max engine speed (rpm)	Capacity fuel tank (l)	Capacity Oil Capacity (l)	L x W x H - (mm)	Det weight kg.	Engine make	Engine model	Engine HP
CPS 165	160	102	2700	37	11	2705 x 1500 x 1435	950	M & M	MDI 1895 B	40
CPS 300-100	300	102	2300	100	19	Portable 3305 x 1680 x 1983 Skid Mounted 2175 x 1180 x 1529	CPS 300-100 -1360	Ashok Leyland Hino	AL W04D	80
CPS 370-125	370	125	2400	100	22		CPS 370-125 -1440		AL W04CT	111
CPS 400-100	400	102	2400	100	22		CPS 400-100 -1440			
CPS 400-150	425	150	2400	150	23.5	Portable 3600 x 1735 x 1825 Skid Mounted 2631 x 1375 x 1580	Portable 1720 Skid Mounted 1520	Ashok Leyland	AL H4ACTI Inline FIP	130
CPS 425-125	425	125	2400	150	23.5					
CPS 450-200	450	200	2200	190	35					
CPS 500-175	500	175	2200	190	35	Portable 3980 x 1960 x 2256 Skid Mounted 2985 x 1504 x 1919	Portable 2100 Skid Mounted 1890	Ashok Leyland	AL UW6DTI	170
CPS 500-150	550	150	2200	190	35					
CPS 650-100	650	102	2200	190	35					
CPS 550-200	550	200	2100	190	35	Portable 4190 x 2032 x 2360 Skid Mounted 3000 x 1500 x 2020	Portable 3100 Skid Mounted 2700	Cummins	6CTA 8.3	205
CPS 675-175	675	175	2200	284	52					
CPS 600-200	600	200	2200	284	52					
CPS 600-250	600	250	2200	284	52	Skid Mounted 3942 x 1600 x 2465	4100	Cummins	NAT855C-BC	260
CPS 1000-275	1000	275	1800	-	72					395
CPS 1100-300	1100	300	1800	-	72					415
CPS 1200-330	1200	330	1900	-	72	3750 x 2102 x 2256	5318	Cummins	KTA-1150-C	430
CPS 1350-425	1250	362/425	1950	-	80					585

\* Fuel Tank Available only for Portable Version  
1 - according to ISO1217 ed.3 1996 annex D

\* Specification are subject to change, without prior notice



# VAIBHAV ENGINEERING PARTS



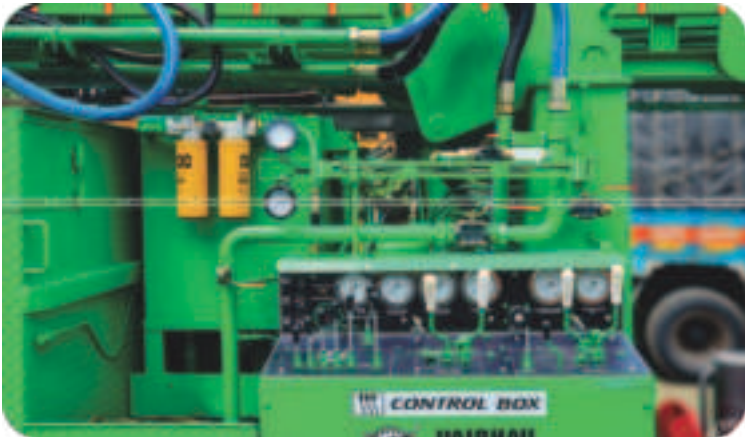
Water Well Ring & Drilling Parts



VAIBHAV

ENGINEERING

THE NAME OF Trust...





# 2024 EXPO PHOTO GALLERY



Our company is proud to attend the leading Mining & Drilling Expo in Africa! Experience our top-notch solutions and innovations.



Water Well Ring & Drilling Parts



**VVAIBHAV**  
ENGINEERING

THE NAME OF *Trust*...







**VVIBHAV**  
ENGINEERING

THE NAME OF *Trust....*

**GLOBE**

OUR CLIENTS ACROSS THE GLOBE

Vaibhav Engineering Production Unit & Service Unit.  
Vaibhav Rig Tools & Rig Spare Parts (Retail Outlet)





## THE NAME OF *Trust*....